



Address
654 Petrolia Road,
Toronto, ON M3J 2W3

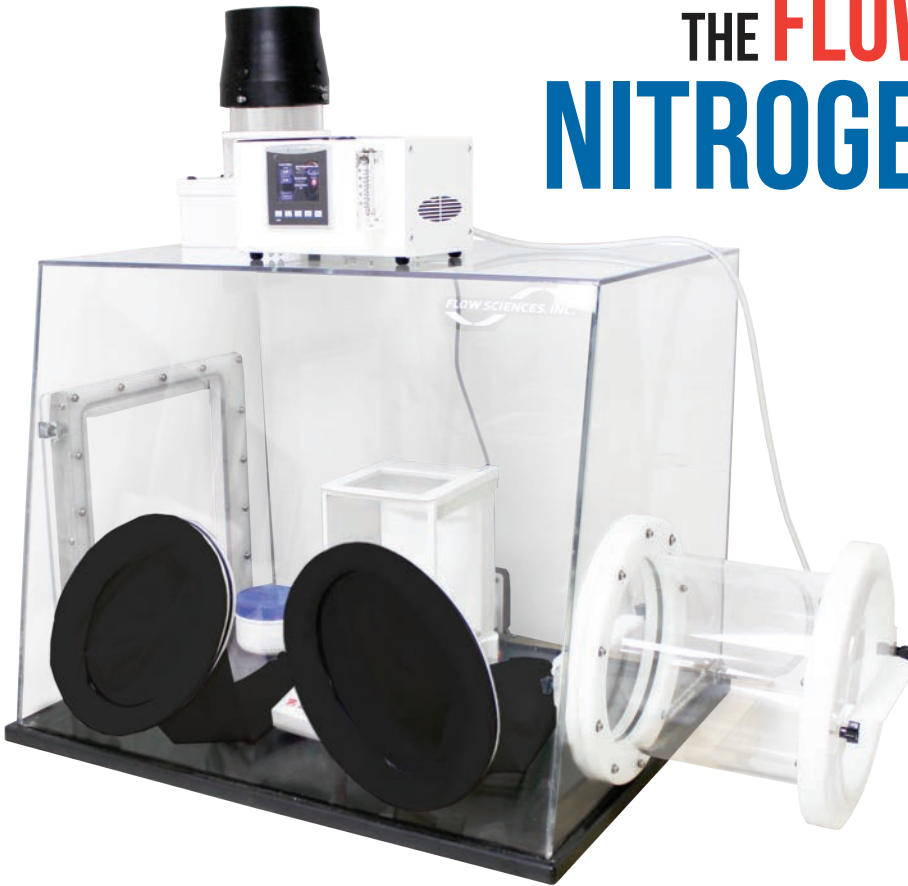
Tel: (416) 736-6166
Toll Free: (800) 387 3570
Fax: (416) 736-9346
E-mail: info@betatekinc.com



END SERIES



THE FLOW SCIENCES NITROGENEMA™ SERIES



- ACHIEVE AND MAINTAIN LOW HUMIDITY OR OXYGEN LEVELS
- HEPA FILTRATION TO HOUSE EXHAUST WITH ONE WAY CHECK VALVE
- GAS METERING SYSTEM TO CONSERVE INERT GAS AND USE IT MOST EFFICIENTLY

SAFETY. With HEPA filtration, a one way check valve, and the ability to connect to a house exhaust system, this product & personnel safety enclosure provides both the operator and the application inside the highest level of safety available. With Flow Sciences' reputation for safety, and the ability to engineer containment for your application, it really does put this enclosure in a class of its own.

DESIGN. Using AGS (American Glovebox Society) guidelines the glovebox is designed with a 28" depth and comfortable 10" oval glove ports, allowing for minimized technician arm, wrist, and shoulder fatigue all while maintaining a controlled environment.

PHENOLIC BASE. The chemically resistant phenolic base is dished to maintain spills and coated to protect the work surface from harmful chemicals

SEALED DOOR / TRANSFER PORT. For ease of loading and unloading equipment, the END series is available with a sealed door and a transfer port for sample loading and unloading.

STATIC DISSIPATIVE ACRYLIC WALLS. FSI uses clear acrylic walls with a static dissipative coating to reduce static in the enclosure.

PORTABLE DESIGN. This enclosure is lightweight which makes it easy to relocate as the dynamics of the laboratory space changes.



Gas Metering System
(FS1501)

- Trending graphs display of RH%, O₂, or temperature.
- Purge and low flow settings to maintain desired environment.
- Nitrogen saving auto shut off when set point of RH% or O₂ is reached.
- Audio and Visual Alarm when outside set point range.
- Oxygen sensor sold separately.

SAVE MONEY BY
CONSERVING NITROGEN

CONTAINMENT AT ITS DRIEST. THIS ENCLOSURE IS CAPABLE OF PROTECTING YOUR PROCESS BY NEARLY ELIMINATING MOISTURE OR OXYGEN WITH THE FLOW OF INERT GAS. DON'T SPEND TENS OF THOUSANDS OF DOLLARS ON A CUMBERSOME METAL ISOLATOR, SEE HOW THE FLOW SCIENCES END SERIES CAN SOLVE YOUR APPLICATION NEEDS.



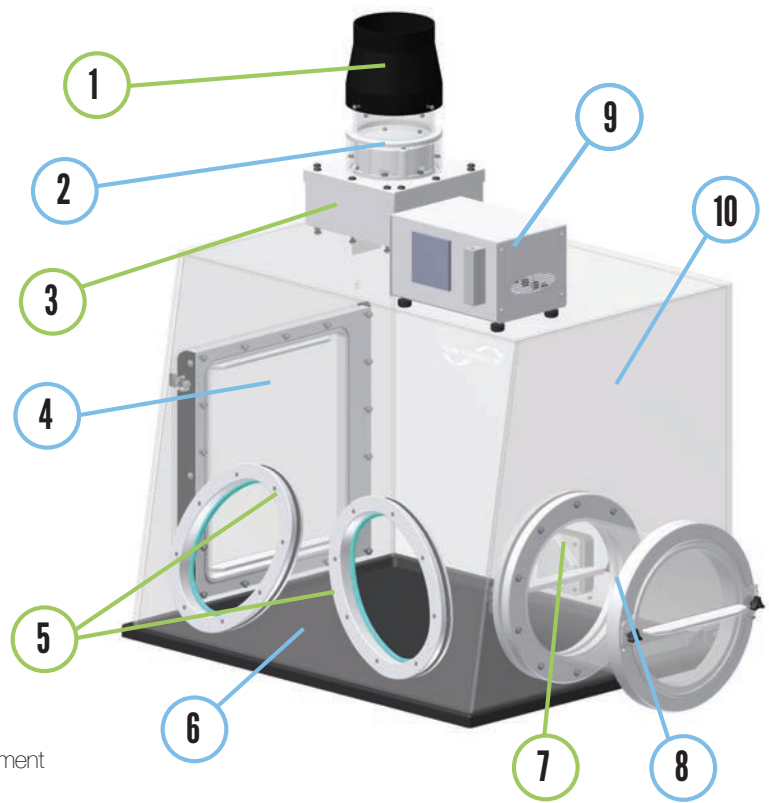
Address
654 Petrolia Road,
Toronto, ON M3J 2W3

Tel: (416) 736-6166
Toll Free: (800) 387 3570
Fax: (416) 736-9346
E-mail: info@betatekinc.com



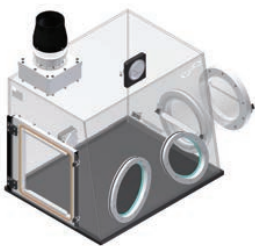
- 1 THIMBLE** - Uses room air to keep negative pressure above the check valve to vent nitrogen into house exhaust
- 2 ONE WAY CHECK VALVE** - Prevents room air from entering enclosure when fully purged
- Maintains internal positive pressure
- 3 HEPA FILTER** - HEPA filtration to prevent particulate from escaping to the house exhaust system
- 4 SEALED ACCESS DOOR** - Access door for loading and unloading equipment
- Sealed to prevent leaks
- 5 10" GLOVE PORTS** - Comes standard with butyl gloves. Custom options are available upon request.
- 6 DISHED BASE** - Dishd phenolic base for catastrophic spills
- Can hold 1.5 Liters in the 3' unit
- 7 QUAD RECEPTICAL** - NEMA rated hospital grade interior quad receptical for equipment
- 8 TRANSFER PORT** - Dual door transfer port for loading and unloading samples
- Sealed to prevent leaks
- 9 GAS METERING SYSTEM** - Conserves gas requirements to maintain environment
- Two adjustable flow rates for high flow purge and low flow maintain
- 10 ACRYLIC WALLS** - Static dissipative walls to reduce static
- Clear cast acrylic for application view

FEATURES & BENEFITS



*Shown with optional metering system

EXHAUST OPTIONS AND DIMENSIONS



EXHAUST OPTION C
HEPA filter included. Used for applications requiring filtration for powders. Also includes thimble connection for venting to house exhaust.

*FS1501 Metering System Optional

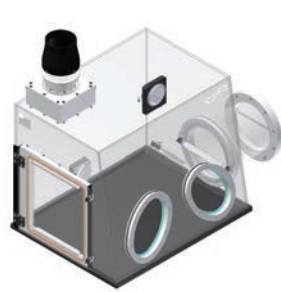


EXHAUST OPTION D
No filter and no thimble connection to house exhaust. Outlet valve on side of enclosure can be exhausted.

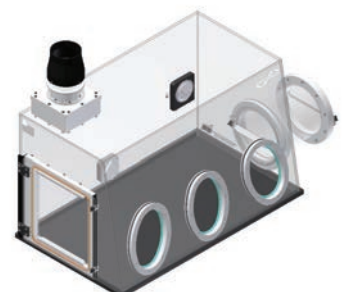
*FS1501 Metering System Optional

MODEL	EXT. WIDTH	EXT. DEPTH	INT. HEIGHT	INT. DEPTH	TOT. HEIGHT	TOT. WIDTH
END362828ACK2	35.75" 90.81 cm	29.38" 74.62 cm	27.25" 69.22 cm	26.00" 66.04 cm	42.70" 105.68 cm	50.70" 128.77 cm
END482828ACK2	47.75" 121.28 cm	29.38" 74.62 cm	27.25" 69.22 cm	26.00" 66.04 cm	42.70" 105.68 cm	62.69" 159.2 cm

MODEL	EXT. WIDTH	EXT. DEPTH	INT. HEIGHT	INT. DEPTH	TOT. HEIGHT	TOT. WIDTH
END362828ADK2	35.75" 90.81 cm	29.38" 74.62 cm	27.25" 69.22 cm	26.00" 66.04 cm	34.00" 74.60 cm	50.70" 128.77 cm
END482828ADK2	47.75" 121.28 cm	29.38" 74.62 cm	27.25" 69.22 cm	26.00" 66.04 cm	34.00" 74.60 cm	62.69" 159.2 cm



3' UNIT



4' UNIT

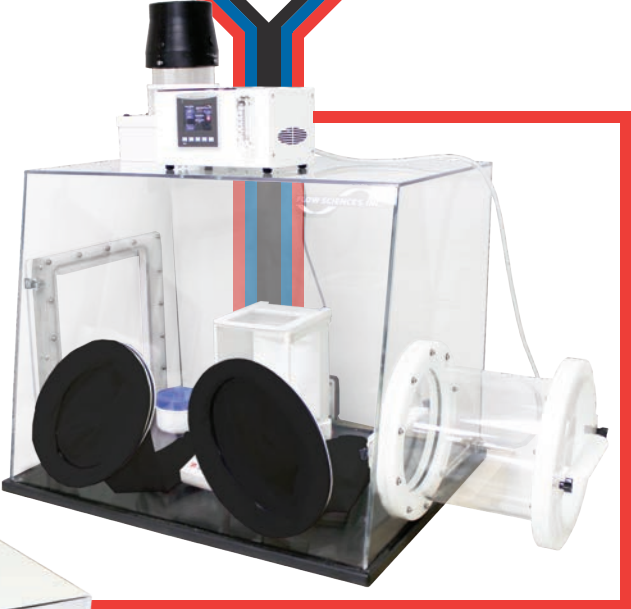
SAFETY



FOR USE WITH APPLICATIONS AND SUBSTANCES SUCH AS:

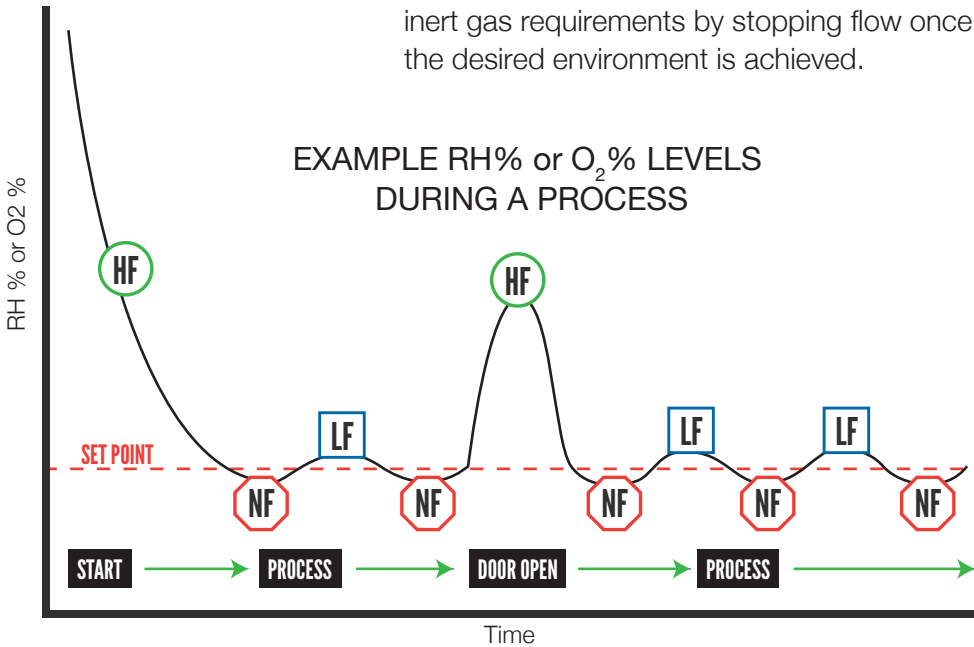
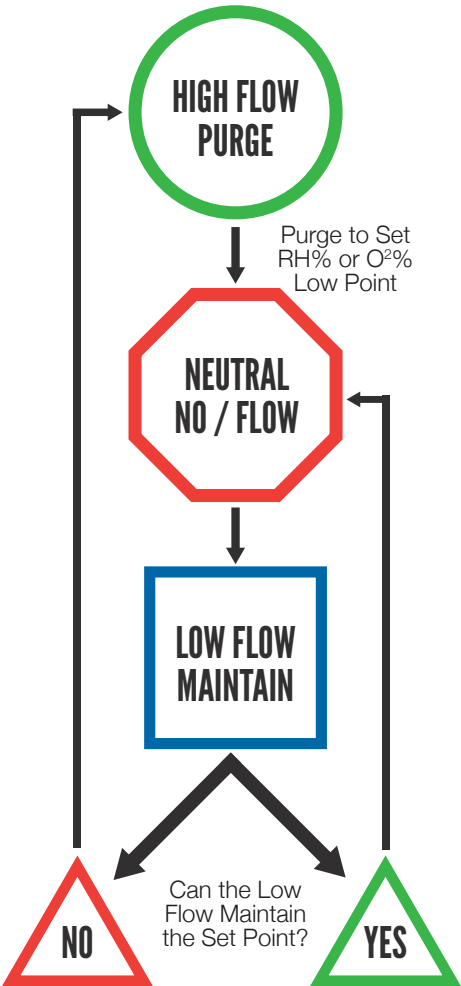
- PYROPHORIC SUBSTANCES
- HYGROSCOPIC SUBSTANCES
- SUBSTANCES THAT REACT WITH MOISTURE
- SUBSTANCES THAT REACT WITH OXYGEN
- REACTIVE SUBSTANCES
 - WEIGHING
 - MIXING
 - DISPENSING
 - AND MORE...

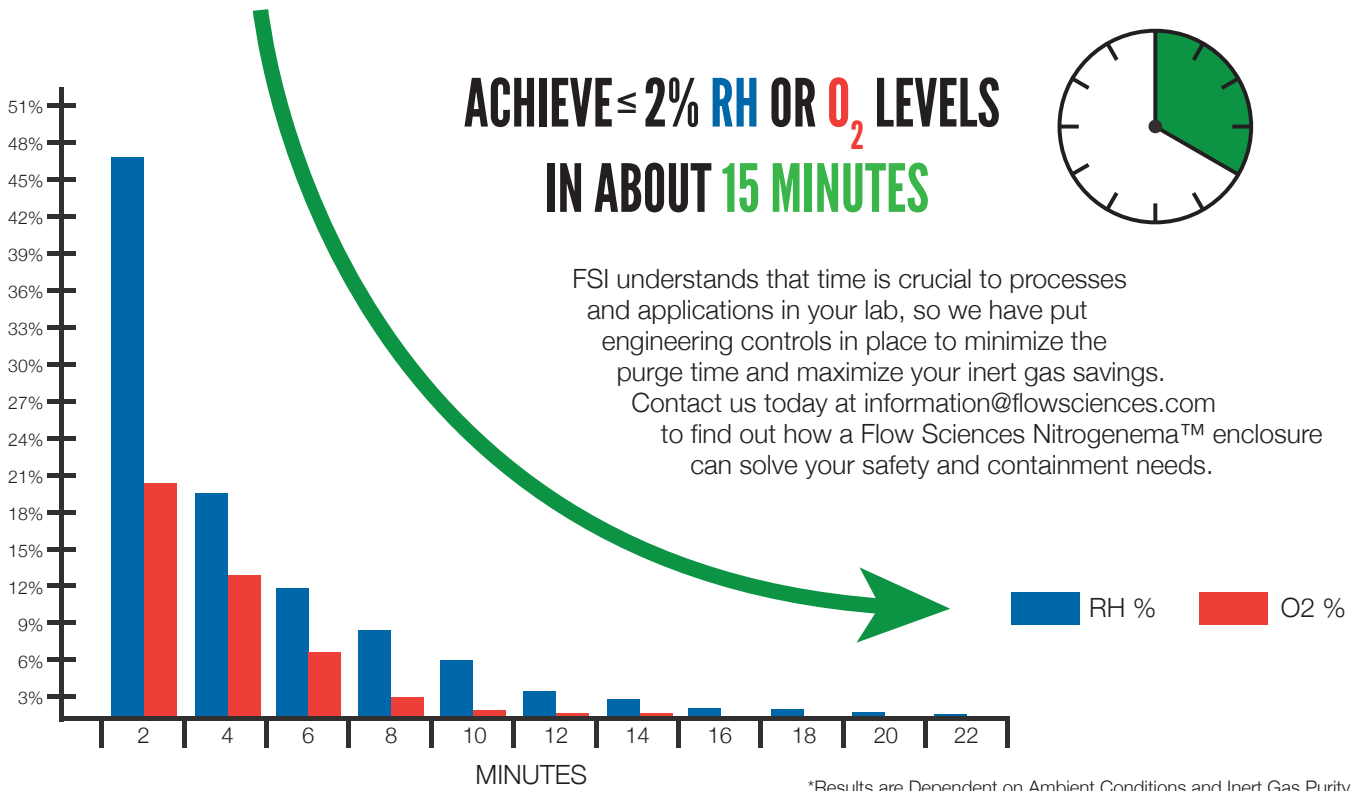
PROTECT YOURSELF AND YOUR PROCESS



PROTECT YOUR PROCESS AND SAVE GAS

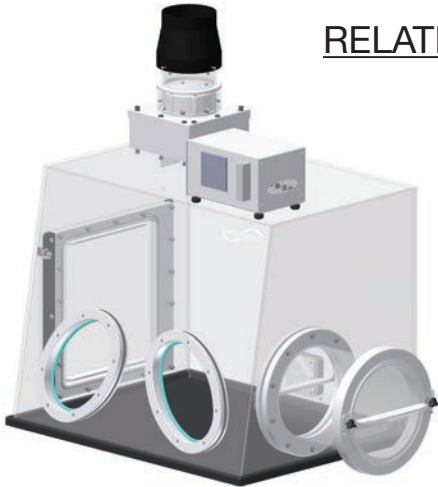
The FS1501 gas metering systems protect the application by maintaining the desired RH % or O₂ % levels automatically which improves stability and reproducibility. It also reduces inert gas requirements by stopping flow once the desired environment is achieved.





RELATIVE HUMIDITY SYSTEM

- Nitrogenema™ Enclosure
- HEPA Filtration
- FS1501 Gas Metering System



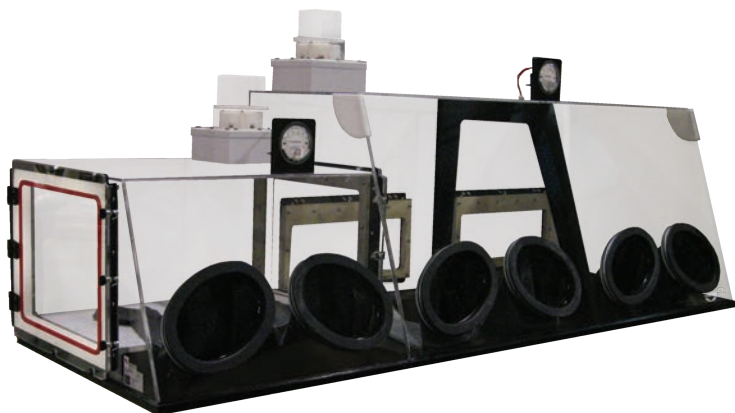
OXYGEN SYSTEM

- Nitrogenema™ Enclosure
- Oxygen Sensor
- HEPA Filtration
- FS1501 Gas Metering System



PACKAGES

CUSTOM CAPABILITIES

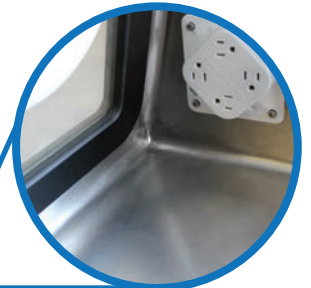


MULTI-STAGE NITROGEN PURGE ENCLOSURE and ANTICHAMBER



STAINLESS STEEL AND GLASS ENCLOSURE

COVERED CORNERS



Address
654 Petrolia Road,
Toronto, ON M3J 2W3
E-mail: info@betatekinc.com

Tel: (416) 736-6166
Toll Free: (800) 387 3570
Fax: (416) 736-9346

