

# SMALL VOLUME

*Performing dissolution tests on high potency drugs with low concentrations of active pharmaceutical ingredients is difficult, if not impossible, with a standard apparatus 1 or 2 dissolution bath. Common analytical instruments are not sensitive enough to detect such low concentrations. Similar difficulties occur during dissolution testing of medical devices, microparticles, beads, and topical drugs, such as creams, gels, and ointments. Distek's Small Volume Conversion Kit offers the perfect solution to all of these common dilemmas.*

- **INTERCHANGEABLE PADDLES & BASKETS**

Interchangeable mini stirring elements allow the shaft to remain in place for a quick changeover between paddles and baskets.

- **VOLUME FLEXIBILITY**

The Small Volume Conversion Kit is available in 100 mL and 200 mL volumes offering improved sensitivity and analytical results.

- **AVAILABILITY**

Distek's Small Volume Conversion Kit is available for use with these Distek dissolution instruments: Model 2100 Series, Model 2500, Model 2500RTD, Evolution 6300 and symphony 7100.

- **ATTACHES DIRECTLY TO A STANDARD DISTEK DISSOLUTION SHAFT**

When using a standard Apparatus 1 or 2 Dissolution system from Distek with detachable stirring elements the mini shaft attaches directly to the end of the shaft for quicker change over from conventional to mini dissolution tests.

- **FLEXIBILITY BY DESIGN**

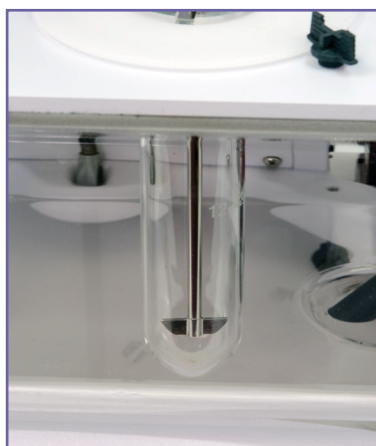
Ability to run mini versions of paddles, baskets, intrinsic, and ointment cell applications provides unmatched versatility for the laboratory.



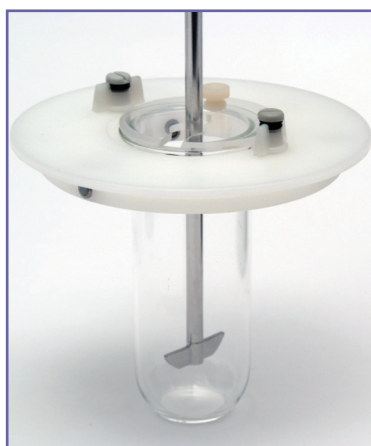
# DISTEK

## CONFIGURATIONS

<b>Small Volume Conversion Kit - 100 mL</b> <b>Small Volume Conversion Kit - 100 mL (Set of 6)</b>	<b>2800-0600</b> <b>2800-0600-6</b>	Small Volume Conversion Kit for the Model 2100Series, Model 2500, Model 2500RTD and Evolution 6300 Dissolution System. Includes: 100 ml glass dissolution vessels, detachable mini paddles, shafts, shaft adapters, vessel covers, deck adapter plate.
<b>Small Volume Conversion Kit - 200 mL</b> <b>Small Volume Conversion Kit - 200 mL (Set of 6)</b>	<b>2800-0601</b> <b>2800-0601-6</b>	Small Volume Conversion Kit for the Model 2100Series, Model 2500, Model 2500RTD and Evolution 6300 Dissolution System. Includes: 200 ml glass dissolution vessels, detachable mini paddles, shafts, shaft adapters, vessel covers, deck adapter plate.
<b>Small Volume Conversion Kit - 100 mL</b> <b>Small Volume Conversion Kit - 100 mL (Set of 6)</b>	<b>2800-0858</b> <b>2800-0858-6</b>	Small Volume Conversion Kit for Model 2500 Waterbath Based Dissolution System. Includes: 100 ml glass dissolution vessel, detachable mini paddle, shaft, shaft adapter, vessel cover and G2 deck adapter plate. Requires Custom Sample Probe, 2800-0810.
<b>Small Volume Conversion Kit - 200 mL</b> <b>Small Volume Conversion Kit - 200 mL (Set of 6)</b>	<b>2800-0859</b> <b>2800-0859-6</b>	Small Volume Conversion Kit for Model 2500 Waterbath Based Dissolution System. Includes: 200 ml glass dissolution vessel, detachable mini paddle, shaft, shaft adapter, vessel cover and G2 deck adapter plate. Requires Custom Sample Probe, 2800-0810.
<b>Small Volume Conversion Kit for the symphony7100 - 100 mL</b>	<b>2800-0502</b>	Small Volume Conversion Kit for symphony 7100 Bathless Dissolution System. Includes: 1 each of the following 100 ml glass dissolution vessels, detachable mini paddle blade for 7100, vessel cover and deck adapter plate. Requires FW Version 2.04 or Newer.
<b>Small Volume Conversion Kit for the symphony7100 - 100 mL (Set of 6)</b>	<b>2800-0502-6</b>	Small Volume Conversion Kit for symphony 7100 Bathless Dissolution System. Includes: 6 each of the following 100 ml glass dissolution vessels, detachable mini paddle blade for 7100, vessel cover and deck adapter plate. Requires FW Version 2.04 or Newer.



Model 2500 with Small Volume Paddle



Small Volume Conversion Kit



Model 2500 with Small Volume Basket

# DISTEK



**BETATEK INC.**  
*Instrumentation Superbly Supported*  
*L'instrumentation à son meilleur*

654 Petrolia Road,  
 Toronto, ON M3J 2W3

Tel: (416) 736-6166  
 Toll-Free: (800) 387 3570  
 Fax: (416) 736-9346