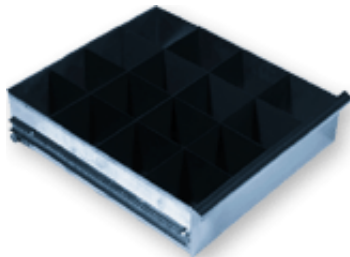


Accessories

- A/V hi-low temp alarm, standard
 - With battery back-up
 - With relay for phone hook-up
- A/V hi-low TEMP/RH alarm (for chambers with microprocessor-controlled RH only)
- Access port, covered, 2" diameter
- Access for wiring (swagelok)
- Casters, 3" diameter, set of four
- Casters, 3" diameter, set of six
- Clock, digital, to control lights or microprocessor
- Coated coil, to resist corrosive vapors
- Column mast
- Control panel cover, lockable plexiglas
- Crankcase heater, for chamber in unheated area
- Data pack, mountable stainless steel instrument panel with temperature recorder and standard A/V alarm



- Door, half size interior freezer door, set of two
- Door, single direction mirrored glass.
- Door/solid, non-glass
- Door lock, per hinged door or set of gliding doors
- Drawer Dividers, 9 or 16 sections



- Drawers, stainless steel
 - Pull-out
 - Two-direction drawers (for pass-thrus)
- Exterior color, other than white or gray
- Extra deep cabinet (29" interior/36" exterior), not available in single door size
- Floor drain, 1.25" diameter.
- High intensity light tray, must order with cabinet
- HGBP (hot gas bypass)

- Humidity Generator and Microprocessor Control for stability studies, available on models with stainless steel interior/exterior and hinged doors only. Price includes 24 hour clock to turn RH on and off and a HGPB on compressor. Ultra-pure DI water required. This option will affect the temperature range of the standard model it is added to. Call to verify that chamber will perform as anticipated.
- Humidity meter
- Lamp set with two fluorescent lights pigtailed together, one plug
- Microprocessor options
 - Retransmit Output (0-5, 1-5, 0-10 vDC, or 0-20, 4-20 mAmp)
 - RS232 Port
- Outlet, vapor proof duplex, for RH chambers
- Outlet, vapor proof duplex
- Pass-thru options. Not available on single door models.
- Ramp, for mini walk-ins
- Remote compressor package
- Seismic Bolting Kit
- Shelf, epoxy coated steel wire
 - Models xx33, xx72 (28" or 32" x 24")
 - Models xx54, xx79, xx103 (24" x 24")
- Shelf, half
- Stainless steel exterior or interior
- Stacking kit for undercounter models



- Switch, light
- Switch, power
- Temperature control, multipoint ramp and soak microprocessor

- Horizontal Air Flow Ducts
- Humidistat controlled tap water RH generator (insect and plant growth incubators)
- Thermometer, solar digital, °C
- Thermometer, temperature recording, 6" seven day
- Thermometer, temp/RH recording, 10" seven day (for chambers with microprocessor-controlled RH only)
- Ventilation system, fresh air for plants/animals
- Vibration reduction package
- Voltage conversions, to 230V/50h, 220V/50h, 220V/60h, or 208V/60h
- Wooden crate, for export